



## PARADE SNARE DRUM

- MODEL ● 825-SNPCBP/SNPCSP/SNCRP
- BODY ● Hard rock 6-ply 16" Maple Shell
- FINISH ● Black
- SIZE ● 14" x 12"
- HARDWARE ● Black or Silver Powder Coat, or Chrome
- HEADS ● Black

- Wood-bearing edge allows the head to breathe resulting in less stress on fingers and hands, as well as better resonance and sound quality
- 16 perfect-tune guts are evenly distributed over the snare side head for maximum sound and projection
- ZERO THROW GUTS means fast, accurate tuning
- Pairs with most May carriers and stands
- Add or remove ON2 slips with no hardware changes




**EIGHT<sup>8</sup>FIVE**  
ON YOUR MARK


By B.A.C. Musical Instruments

1219 Lydia Avenue  
Kansas City, MO 64106

(816) 945-9133

**8-2-5.COM**

 @825music

 @825marching

Sales  
825@bacmusic.com

General Inquiries  
825@bacmusic.com

Customer Support  
support@bacmusic.com

Repairs & Warranty  
support@bacmusic.com

© 2023 B.A.C. Musical Instruments  
All Rights Reserved



# MARCHING PERCUSSION

825's Marching Percussion Series is built for ALL players, no matter your entry point. Instrument design derives from decades of experience and success in the marching world, and the rich, smooth, resonant voices blend and project in any venue. 825 recognizes the demands and challenges required for greatness—our promise is to deliver *every* time.





# ON YOUR MARK.

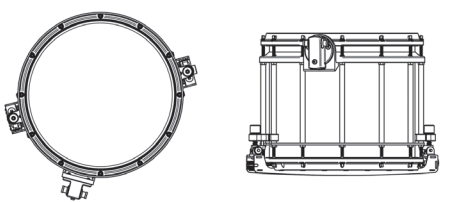
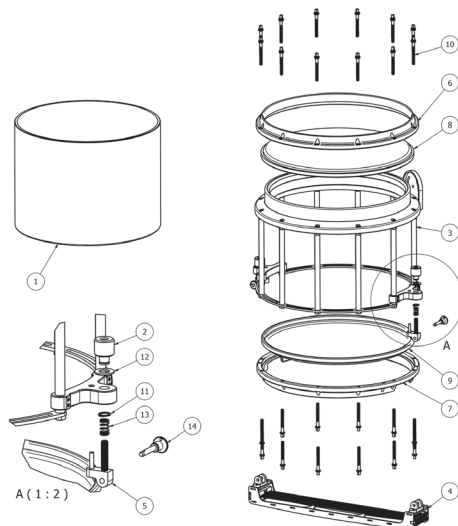


EIGHT-FIVE

## MARCHING SNARE DRUM

- MODEL ● **825-SNPCB/SNPCS/SNCR**
- BODY ● Hard rock 6-ply 16" Maple Shell
- FINISH ● Black or White
- SIZE ● 14" x 12"
- HARDWARE ● Black or Silver Powder Coat, or Chrome
- HEADS ● Black

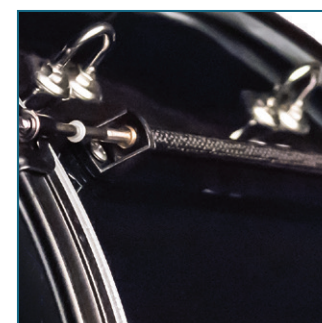
- Wood-bearing edge allows the head to breathe resulting in less stress on fingers and hands, as well as better resonance and sound quality
- 16 perfect-tune guts are evenly distributed over the snare side head for maximum sensitivity & projection
- ZERO THROW GUTS means fast, accurate tuning
- Pairs with most May carriers and stands
- Add or remove ON2 slips with no hardware changes



## MARCHING BASS DRUM

- MODEL ● **825-MBD**
- BODY ● Hard rock 6-ply Maple Shell
- FINISH ● Black
- SIZE ● 14" x 16"/18"/20"/22"/24"/26"  
16" x 28"/30"
- HARDWARE ● Black Powder Coat Slims
- HEADS ● Black

- Small, slim profile claws reduce weight
- Lightweight carbon fiber lugs with 2 set screws hold firm on the shell
- Wood reinforcement ring on bearing edge of 16"/18"/20"/22" bass sizes
- Superior resonance and sound quality
- Add or remove ON2 slips with no hardware changes







EIGHTtoFIVE

# MARCHING TENOR

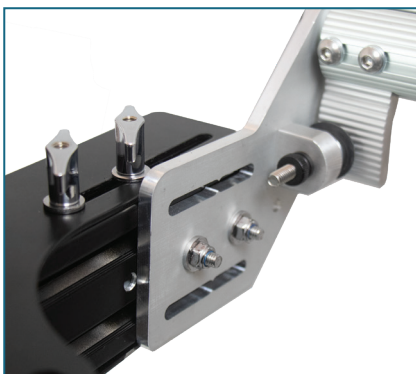
## MARCHING TENOR

- BODY ● Hard rock 6-ply Maple Shell
  - FINISH ● Black Powder Coat
  - HOOPS ● 2.3mm Hoops
  - HARDWARE ● Black Powder Coat/Aluminum
  - HEADS ● Black
- \*must buy carrier with back bar

## MODEL: CONFIGURATIONS

- 825-TNQUADSM ● Quad set, 8"/10"/12"/13"
- 825-TNQINTSM ● Quint set, 6"/8"/10"/12"/13"
- 825-TNQUAD ● Quad set, 10"/12"/13"/14"
- 825-TNQINT ● Quint set, 6"/10"/12"/13"/14"
- 825-TNHEX ● Hex set, 6"/8"/10"/12"/13"/14"

- Adjustable, lightweight frame for better weight distribution improving comfort and durability
- Precision cut 6ply maple shells, for maximum tone quality and projection
- Superior resonance and sound quality
- Add or remove ON2 slips with no hardware changes





## PARADE TENOR

### 825-TNPAR ● **PARADE MARCHING TENOR**

- BODY ● All wood, hard rock 6-ply Maple Shell
- FINISH ● Black Powder Coat
- SIZE ● 16" x 14"
- HOOPS ● Aluminum/ Black Powder Coat
- HEADS ● Black
- INCLUDES ● Leg Rest, Multi-Angle Bar & Sling

- Can be worn as a Leg Tenor or a Chest Tenor
- Add or remove ON2 slips with no hardware changes



### 825-TNFLUB ● **ALL WOOD TENOR**

- BODY ● All wood, hard rock 6-ply Maple Shell
- FINISH ● Black Powder Coat
- SIZE ● 16" x 14"
- HOOPS ● Aluminum/ Black Powder Coat
- HEADS ● Black
- HARDWARE ● J-Bar Attach, No Bottom Head
- CARRIER ● Pairs with most May carriers

